

THE LANDING POST

A Newsletter designed to inform our growing school community of
Anne Hamersley Primary School

ROB GUY- ACTING PRINCIPAL

Volume 5—Issue 2

IMPORTANT DATES



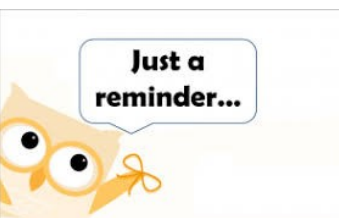
Dear Parents and Friends,



PARENT MEET AND GREET-WEEK 3 - WEDNESDAY 19 FEBRUARY

A tradition established from the foundation of the school is for teachers to conduct a special meeting to meet and greet parents. At this meeting parents will be familiarised with the class culture and the way classes are conducted. Also discussed will be the ways in which parents can engage with the school and assist their children at home. A Handbook setting down all matters discussed will be available. In an effort to ensure that all parents are able to attend the following times are available for you. Both presentations will contain identical information. · Session 1 2.40pm-3.00pm · Session 2 5.00pm-5.20pm.

Please remember that I have an "open door" policy. So do come in and discuss any issue that may be causing you concern. Of course there are times when you may require to call administration and make an appointment. Teachers have similar availability but also require that you make an appointment to see them.



A REQUEST FOR PAYMENT

Voluntary Contributions and Charges are now due. These charges are for the whole year and are used to purchase all the added extras that enable us to provide quality education for your children. You are reminded that we have EFTPOS facilities which can be used to pay off any school expenses. This includes fees, excursions and incursions. As a community, we are looking forward to a highly successful year, one where your children can grow and a support team can provide the expertise our children require.

Kindergarten \$50.00 · PP - Year 6 \$60.00

REMINDER: EARLY CLOSE EVERY WEDNESDAY AT 2.30PM

www.annehamersleyyps.wa.edu.au





After the Student Councillor Assembly held on Thursday 23 February 2020, our newly appointed student councillors and captains signed their official contracts outlining their roles and responsibilities for 2020.



Jasmine	Kamara	School Captain
Kari	Gutierrez	School Captain
Tory	Dennis	School Councillor
Isabella	Harvey	School Councillor
Dalounny	Vilainam	School Councillor



1. Travel through the car parks at WALKING PACE ONLY - 5 km/h.
2. Ensure that you park in designated bays only, getting out of your car to accompany your child across the car park.
3. Do not call your child to your car, expecting them to dash across the car park to get to you.
4. Do not park on footpaths as several of our children ride their bikes or scooters and will be obliged to ride on the road to avoid you.
5. Ensure that **DISABLED CAR PARKS** are left free for the purpose they were designed.
6. Walking your child to school is the ideal healthy solution.

2 Slow down and enjoy the ride

One of my favourite stories is the Tortoise and the Hare. It taught me that **slow and steady wins the race!**

When we drive to school, my parents always make sure they drive slow.

There are special 40km/h speeds in school zones.

I always stay at a **safe speed** when I'm walking or riding, so I can look out for anything risky like cars!



www.swan.wa.gov.au

School road safety for parents

Research suggests children develop their road safety behaviour and attitudes as young as three years of age.

Most parents know that children are very keen to learn at this age, but may not consider how driving habits may influence their child's future attitudes and behaviour to road safety.

What can you do to help?

There are a number of things that parents and guardians can do to ensure the safety of children within school zones.

These include:

- Always be aware of children - both yours and others
- Follow the speed zones applicable to roads located around schools
- Encourage walking or cycling to school to drop off or collect children
- Plan your trip so you arrive with time to spare in case you have to walk a distance
- Use pick up/set down areas where possible
- Be aware of any speed and/or parking restrictions and adhere to them
- Use crosswalks at all times
- Drive, park and behave responsibly - saving a couple of minutes is not worth the risk
- Take notice of sign restrictions - vehicles should not stop, park, drop off or pick up children at all where sign restrictions are in place.
- Safe drop off and pick up - ensure your vehicle is facing the same way as the direction of traffic flow.

Fines and Penalties

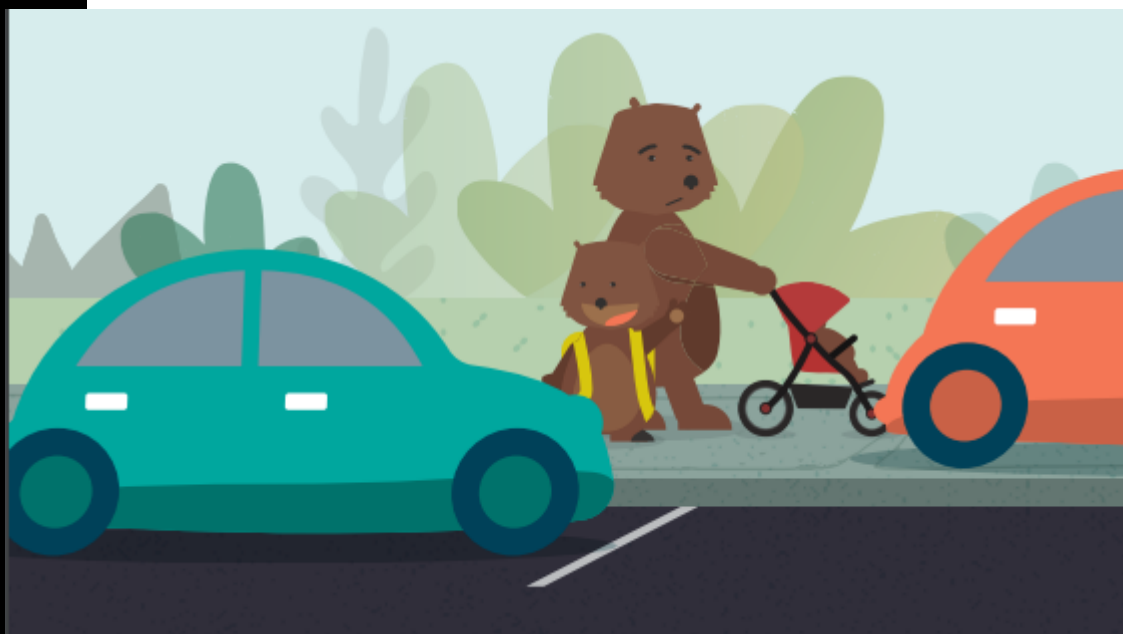
The City of Swan enforces parking restrictions around schools and has a dedicated annual program.

Officers will patrol schools, take photographs of vehicles parked incorrectly and infringement notices are then issued to the registered vehicle owner.


You may be issued an infringement if you:


- Stop or park on the footpath
- Stop or park on a verge without consent
- Park in a No Parking area
- Stop in a No Stopping area
- Park to obstruct an intersection
- Park vehicle facing the wrong way
- Park to obstruct a driveway, accessway or crossing
- Park on a median strip
- Double park
- Park in a Bus Zone

For a current list of modified penalties, please refer to the City's website.



City of Swan
2 Midland Square Midland
PO Box, 196 Midland WA 6936
9267 9267

 /cityofswan

 /cityofswanwa

P&C ANNUAL GENERAL MEETING

At the first meeting of the year all executive positions were vacated and elections held. Congratulations to the following parents on being elected to these important positions.

P&C President:	Amy Bond
Vice President:	Sophie Pearse
Secretary:	Kelly Kirton
Treasurer:	Rachel Olliver
Executive:	Nicole Amato Lovinia Mc Donnell Tina Grace

Quote for the fortnight

When you can't find the sunshine be the sunshine!

R GUY

ACTING PRINCIPAL

NAPLAN



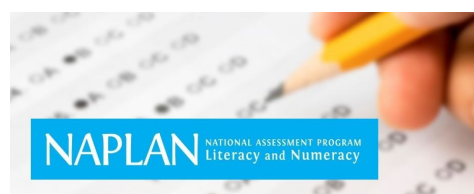
Year 3 and 5 students will be sitting NAPLAN tests during Week 3 and Week 4 of Term 2. All students will begin with writing tests on the 12th of May. This will be followed by tests in reading, language conventions and numeracy. The final day for testing will be the 22nd of May. All testing will be online, except Year 3 writing – which is completed on paper.

You can access the NAPLAN public demonstration site by clicking on the following link:

<https://www.nap.edu.au/online-assessment/public-demonstration-site>

It is useful to view this site with students, so they can become more familiar with the types of questions and layout of the online platform.

If you require further information, please speak to your child's teacher, or contact Miss Lowe (brooke.lowe2@education.wa.edu.au)





The On-entry Assessment Program

The On-Entry Assessment Program will be conducted in weeks 3-6 of term 1. Pre Primary teachers will be assessing critical literacy and numeracy skills and Year 1 teachers will be assessing numeracy skills. Year 1 Literacy skills will be assessed using other methods.

Conducting this assessment early in the year ensures that your child's teacher has information about the current skills and understandings of each child to assist in the planning and development of targeted learning programs that address the needs of each individual and identify children who may require early intervention or extension. This approach is supported by national and international research into the early identification of students' literacy and numeracy skills.

All Pre-primary students in West Australian public schools participate in the on-entry assessments. The Term 1 program is mandated in order to provide each teacher with information on all children in the class.

+++++

Parent Help Course

Wednesday 4 March 8.45-9.45am



In the Library

You are invited to attend a free learning opportunity.

Are you available in the mornings after drop off?

Would you like to be more involved in your child's education?

Do you want to learn how to support children learning to read?



Can you help?

Parent help procedure

- Sign up at your child's classroom
- Complete a confidentiality form at the office
- Sign in at the office on the day
- Wear your parent help badge
- Join other committees
- Ask your child's teacher... "how can I help?"

Anne Hamersley Primary School

TERM 1—WEEK 2 ASSEMBLY AND AWARD WINNERS

Thank you to the parents and friends who attended our Assembly last Thursday.

Please remember that Assemblies are held on Thursdays of Even Weeks commencing at 8.55.

Following some whole school singing, the following children were awarded Honour Certificates:

Anuarite Kakutu	Finn Ledger	Elijah D'Rozario	Kristoff Gutierrez
Noah Baptiste	Zion Galiki	Kiana Kamira-Dunn	Ryder Muir
Drustan Adams	Bronte Armitage	Cooper Keeler	Jett Phillips
Tellan McDonough	Thulani Haputhanthree	Anastasia Husk	Christina Nelson
Hudson Graziadelli	Carter Wawatai	Georgina Nelson	Matthew Blankley
Gursifat Singh	Oliver Kemenade	Hannah McKechan	Liam Turner
Ava Garlett	Mackenzie Lord	Bailee Eade	Jaxon Williams



UPDATE on Updat-ed App



Up-dated App

We have received information from our Up-dated App developer that they are currently in the process of a substantial upgrade and improvement to the Up-dated application.

New subscribers may experience difficulty in joining the App.

We apologise for any inconvenience caused, however, we are looking forward to the new features within the App that will be available for our school community by the end of Term 1.



POSITIVE PARENTING By Professor Matt Sanders

As a parent, you want to do the best for your child, but how do you know what's right? What do you do when your child answers back? Or is being bullied at school? Or starts telling obvious lies?

Over coming weeks in The Landing Post, I will share some of Triple P's proven tips for the best ways to handle common behavioural and developmental problems in children. From battling disobedience to encouraging homework routines, I'll cover those everyday issues to help you work out some strategies to suit your family.

I'll highlight common "parent traps" and hopefully make the very important job of raising kids as enjoyable and rewarding as possible.

But remember, parenting is sometimes hard work and it may take time to tackle more difficult problems. The good news is that help is always at hand.

Throughout Perth we are offering parenting support with Triple P, one of the world's most highly-regarding parenting programs.

Professor Matt Sanders is founder of the Triple P – Positive Parenting Program.

For more information go to www.triplep-parenting.net or <https://www.triplep-parenting.net.au/au-uk/en/find-help/triple-p-parenting-in-western-australia/>

Anne Hamersley Primary School will be offering parents the chance to attend three Positive Parenting Seminars. Details will be confirmed soon and provided in The Landing Post.

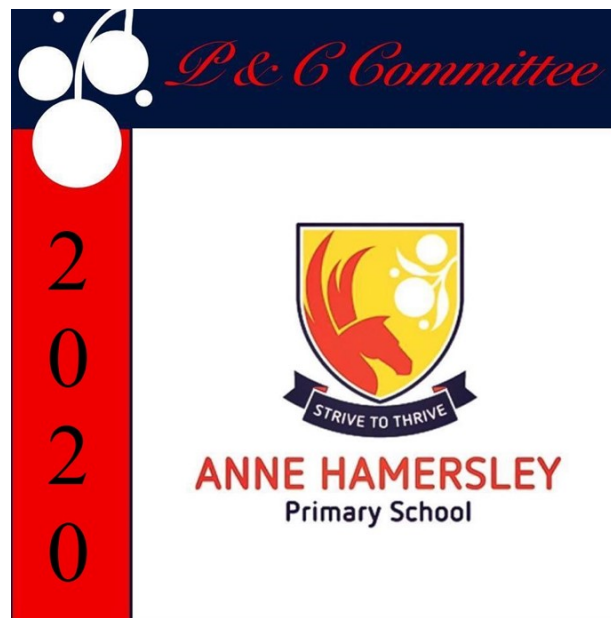
Sarah McLean Psychologist

Anne Hamersley Primary School Updates from your P&C Association



P & C NEWS

I would like to introduce the Anne Hamersley Primary School P&C Committee for 2020



- PRESIDENT – AMY BOND
- VICE PRESIDENT – SOPHIE PEARSE
- SECRETARY – KELLY KIRTON
- TREASURER – RACHEL OLLIVER
- 3 X EXECUTIVE MEMBERS – NICOLE AMATO, LOVINIA MCDONNELL AND TINA GRACE

Thankyou to everyone that attended the AGM last week, it was great to see some new faces and we look forward to working together over the coming year.

The next P&C Meeting will be held in the library on Thursday 27th February at 6pm.

Anne Hamersley Primary School Updates from your P&C Association

Icy Pole FRIDAY!!!

\$1 for a full Icy pole and .50cents for a half, juice boxes \$1.

Available for purchase at the canteen at lunchtime on Fridays.

Kindy and Pre Primary classes will have their orders delivered to the classrooms.



To stay up to date with events and requests for volunteers or to contact us at any time, please visit and like our Facebook page <https://www.facebook.com/Anne-Hamersley-Primary-School-PC-Association-Inc-1558093001148025/> or send us an email at AHPS_pandc@hotmail.com



[This Photo](#) by Unknown Au-

School Banking Tuesday 8:20am in the Library



Join the Dollarmites in 2020....on a savings adventure with..... School Banking!

Every year the School Banking program launches a new savings adventure and eight new exclusive School Banking reward items.

In 2020, School Banking is taking children on a Treetop Savers adventure to the enchanted Treehouse of Savings.

If you would like to know more about School Banking, please ask for a 2020 School Banking program information pack from the school office or visit www.commbank.com.au/schoolbanking

Thank you for supporting the School Banking program and remember, School Banking day is every **Tuesday at 8.20am in the library!!**



ANNE HAMERSLEY
Primary School

Community Notices



CAMP AUSTRALIA

Life Skills
Creative Time
New Experiences
Construction & Manipulative Play
Outdoor Play Time
Homework & Quiet Time

To book, visit:
www.campaustalia.com.au
or call 1300 105 343

Get social and build friendships at OSHC!

An experience in outside school hours care is an experience in forming friendships. You get more than care with OSHC - building confidence, learning life skills and having fun, while trying something new. OSHC is a great way for children to step out of their comfort zone and to get to know some students at their school they may not have otherwise met. Plus, we're all about convenience - there's no travel time, traffic or complicated arrangements to be made, so your child can leave the classroom and be playing soccer, eating a healthy snack or learning how to play a board game within minutes of leaving the classroom.



It's **FREE** to Register. (and if you want to use OSHC, you first need to register). Register at pp.campaustalia.com.au/account/login. Once registered, it's easy to make and manage your bookings online via our Parent Portal.

You may be eligible to claim subsidies on your care usage!

If eligible, to help you with the cost of childcare, you may be entitled to receive the Australian Government Child Care Subsidy. Visit my.gov.au to find out more.

For more information on our service and fees, visit our website www.campaustalia.com.au. Alternatively, come and meet the team in the OSHC room. We'd love to meet you, and you can find out more about OSHC from our friendly, qualified Educators.

We look forward to seeing you and your family soon!
From the Team at Camp Australia



CAMP AUSTRALIA

Life Skills
Creative Time
New Experiences
Construction & Manipulative Play
Outdoor Play Time
Homework & Quiet Time

To book, visit:
www.campaustalia.com.au
or call 1300 105 343

Check out all the fun activities happening in Your OSHC this week!

Outside School Hours Care makes it possible for all parents/guardians to work or attend to other commitments, secure in the knowledge that their children will be in a safe, supportive and fun environment - led by a team of passionate Educators - experiencing exciting and educational activities.

Every moment spent in OSHC is a moment to discover a world of possibility and growth. Having spent the day in a classroom, children need the opportunity and space to explore their own interests and unleash their imaginations - whether that be trying new sports, craft, cooking and much, much more. With activities appropriate for all ages, here is what we have planned for the week ahead:

Monday	Tuesday	Wednesday	Thursday	Friday
- Lego challenge make a tank model	- Make a parachute from plastic bag	- UNO workout -cooking activity scones	-Mr. wolf game -magnetic tiles	-Pretend nail salon Kicking skills learning
-Ambulance coloring pages	-VET dramatic play	- Make a doctor case from paper bag	-moving skills	-hand painting
-Musical chair	-ball games			

It's **FREE** to Register. (and if you want to use OSHC, you first need to register).

Register at pp.campaustalia.com.au/account/login. Once registered, it's easy to make and manage your bookings online via our Parent Portal. You may be eligible to claim subsidies on your care usage! If eligible, to help you with the cost of childcare, you may be entitled to receive the Australian Government Child Care Subsidy. Visit my.gov.au to find out more.

Safety • Meaningful • Innovative • Leadership • Education
we make kids smile

Safety • Meaningful • Innovative • Leadership • Education
we make kids smile

Channel 9 news and 6PR are coming to Ellenbrook sports hub this Thursday. The mayor will be coming down also.

Would like to invite all families and the school community to come down for a free barbecue and prizes to be won.

Nine News and **6PR** are heading to a suburb near you for a Barbecue in the Burbs every Thursday arvo in February!

Watch 6PR's **Oliver Peterson** broadcast *Perth Live* from 3pm as well as **Nine News**' **Scherri-Lee Biggs** present the weather at 4pm and 6pm.

Bring the whole family for an afternoon of fun and entertainment, plus a free sausage sizzle!

Join us this Thursday, February 20 Ellenbrook Sports Hub, Aveley 3pm to 7pm.





ANNE HAMERSLEY
Primary School

Community Notices



2020 5 Week Programs



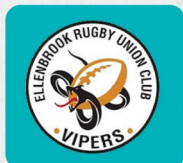
Get active this term with RugbyRoos!

Our 5 Week Programs are a great way to learn and play rugby in a fun and safe environment. Suitable for both **beginners** and **experienced** players.

Registrations open now at rugbyroos.com



**\$50
+ FREE
GIFT**



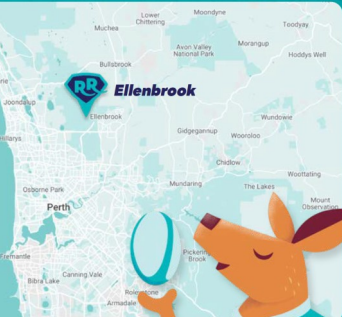
Tackle Life

Dates & Locations

**Ellenbrook
Vipers
Rugby Club**

**Mondays 4-5pm
9 Mar - 6 Apr**

**Thursdays 4-5pm
4 Jun - 2 Jul**



Use the hashtag
#RugbyRoos to share
your experience!

Get In Touch

@rugbyroos
 @rugbyroosau
 info@rugbyroos.com
 (08) 6280 0168



Instrumental Music Lessons
On School Campus!



Small Group & Private Lessons

- Primary Music Institute offer instrumental music lessons right here on school campus!
- To find out all about the music lessons please visit PMI's website. You can check which instruments are available, get up to date program details and apply for lessons online
- Please **ENROL TODAY** via PMI's website
- Lessons are held once per week on school campus – with lessons typically outside school hours
- Only \$18.50 per child per small group lesson (2-5 students for 30 minutes)
- Our small group lessons provide a fun and affordable opportunity to learn instrumental music
- Private lessons (1-on-1) and pair lessons (max 2 students) are also available
- Instrumental music can improve your child's school results – including for reading, maths, coordination, IQ, abstract reasoning, performance confidence... and is great fun!

P: 1300 362 824 E: admin@primarymusicinstitute.com.au www.primarymusicinstitute.com.au



Calling all Boys and Girls Interested
in Playing Footy

Community Day

Date: 23 February 2020

Time: 1:00 pm – 5:00 pm

Venue: Ellenbrook District Open Space

Come down and join in the fun. Lots of activities for the kids

Bouncy Castles

Face Painter

Kicking competitions

Meet our coaches and committee members, catch up with our sponsors and other local businesses, or just grab a Sausage Sizzle or a Coffee



Registrations Now Open

for all Boys and Girls aged Pre Primary to Year 12
All skill levels welcome at the club.

2020 TERM 1

Week	Mon	Tue	Wed	Thu	Fri	Sat	Sun
					31 January	1 February	2 February
1	3 February	4 February	5 February Landing Post Early Close 2.30pm	6 February	7 February	8 February	9 February
2	10 February	11 February	12 February P & C AGM 7pm Early Close 2.30pm	13 February Assembly – School Captains	14 February	15 February	16 February
3	17 February	18 February	19 February Parent Meet & Greet 2.40pm – 3.00pm 5.00pm – 5.30pm Landing Post Early Close 2.30pm	20 February	21 February Subway Lunch Order	22 February	23 February
4	24 February	25 February	26 February Early Close 2.30pm	27 February Assembly – C1 & C3	28 February	29 February	1 March
5	2 March LABOUR DAY	3 March BOARD MEETING	4 March Landing Post Early Close 2.30pm	5 March	6 March Student Councillors Dress up	7 March	8 March
6	9 March	10 March	11 March Early Close 2.30pm	12 March Assembly – E1 & E2	13 March	14 March	15 March
7	16 March	17 March	18 March Landing Post Early Close 2.30pm	19 March	20 March Colour Run	21 March Harmony Day	22 March
8	23 March NAPLAN Practice	24 March NAPLAN Practice	25 March NAPLAN Practice Early Close 2.30pm	26 March Assembly – HARMONY DAY	27 March	28 March	29 March
9	30 March	31 March	1 April Landing Post Early Close 2.30pm	2 April	3 April SUMMER CARNIVAL	4 April	5 April
10	6 April	7 April	8 April HOUSE REWARD Early Close 2.30pm	9 April Assembly - ANZAC	10 April GOOD FRIDAY	11 April	12 April