

# THE LANDING POST

A Newsletter designed to inform our growing school community of  
Anne Hamersley Primary School

**ROD W. SIMEONS - PRINCIPAL**

Volume 1—Issue 18



Dear Parents and Friends,

## RESTRUCTURE OF CLASSES IN PARMELIA TEACHING BLOCK

Commencing on 22 August, several children from the Year 1 -3 classes will be relocated. This has been brought about by our increased numbers and the setting up of an additional class.

We welcome Ms Shiralee Hamer as our new teacher on staff who will be our Year 2 teacher. Ms Hamer comes to us after a few years in country towns and some in Metropolitan schools. Plans are in place to organise a "getting to know you" session as soon as practicable.

## NATIONAL ASSESSMENT PROGRAM IN LITERACY AND NUMERACY 2016 [NAPLAN]

This is to inform parents of children in Year 3 & 5 that the results of the tests your children sat for earlier this year will be sent to you by the end of Term 3. The paper copies will arrive at school next week. These will then be copied to ensure we have file copies and then the originals will be sent to you. Following on from this, I will analyse the results and pass them along to the School Board and a meeting of the P&C Association.



## BOOK WEEK – WEEK 6

All homes were sent a special flyer advising you about the exciting program we have devised for Book Week. The focus is on reading and fun. To this end we have planned to have a famous author in for the children to meet and for a gala school Book Week Assembly to be held on Thursday 25 August. More details are in the attached Book Week flyer – sent to you digitally this time around. We look forward to seeing the children dressed as their favourite book character and making purchases from our Book Fair.

## SCHOOL BOARD ESTABLISHED

The inaugural meeting of the school Board was held on Monday 8 August commencing at 3.15 PM. At this meeting the Board accepted the nomination of Mrs Michelle Carroll as presiding as Board co-Chair. In this its foundation year, she will work closely with me to ensure that we establish sound procedures to gain experience as the years go by.

## 2017 PRE-PRIMARY ENROLMENTS

It is a requirement of the Department of Education that all children currently enrolled in Kindergarten reapply and enrol for entry into Pre Primary in 2017. To ensure that this occurs, you are asked to call in to the School Office as soon as practicable to complete the application form. Office hours are Monday to Friday between 8.30am and 3.30pm. Please provide us with a copy of your child's Birth Certificate, Immunisation details and proof of address. If for any reason you have decided against enrolling your child, please inform our Enrolment Officer as soon as possible.

[www.annehamersleyps.wa.edu.au](http://www.annehamersleyps.wa.edu.au)



# Anne Hamersley Primary School



## LAST WEEKS ASSEMBLY AND AWARD WINNERS

Thank you to the parents and friends who attended our Assembly last Thursday. Please remember that Assemblies are held on Thursdays of Even Weeks commencing at 8.55. Following some whole school singing, the following children were awarded Honour Certificates:



HONOUR CERTIFICATES			
Declan James	Jett Phillips	Luis Uribe Freitas	Raphael Arrieta
Teriina Moke-Brown	Aaron Carroll	Sophia Schiaffini	Vincent Ligasan
Cherry-Jane Reed	Ruby-Annabelle Robbins	Carter Wawatai	Jett Morgan
Tiannah Della Vecchia	Tobias Donnelly		

## STUDENT PASSPORT PROGRAM

Congratulations to all of this weeks Passport achievers.

## 2017 KINDERGARTEN EXPRESSION OF INTEREST—Round 2

Round 2 Expressions of Interest are now being accepted for children born between 1 July 2012 and 30 June 2013 for Kindergarten 2017. Application forms are available from the School Office. First Round offers have now been mailed to families that have submitted their Expression of Interest. For further queries, please phone 9297 7000 or visit us between 8.30am and 3.30pm.

**REMINDER: EARLY CLOSE EVERY WEDNESDAY AT 2.30PM**

# Anne Hamersley Primary School



## FROM THE EXECUTIVE COMMITTEE

The first Inter House sports carnival for Anne Hamersley Primary School is being held on Friday 2<sup>nd</sup> September. On this special day, the P&C are looking to hold a sausage sizzle for the children and spectators throughout the day, a cake stall, refreshment stand and some wonderful prize raffles. Children will be able to pre-order their sausage sizzle prior to the carnival and will be packed up ready for when the children break for lunch - please watch their bags next week for order forms. This is a perfect opportunity to come along and share lunch with your children and cheer them on in their sporting events. We are also seeking the support of our school community with the kind donation of baked goods for our cake stall or to spare an hour or 2 to assist with the packing and distribution of the lunches. If you are able to contribute, could you please send through an email to [AHPS\\_pandc@hotmail.com](mailto:AHPS_pandc@hotmail.com) or a message through our Facebook page *Anne Hamersley Primary School P&C Association Inc.* A big thank you to all the families that stopped by our morning tea last week. It was lovely to meet you all; the support and offers of assistance was greatly appreciated. Our next general meeting will be on Thursday the 6<sup>th</sup> October in the school library from 7pm.

## School Banking

Our School Banking program for Anne Hamersley Primary School is doing exceptionally well. We have had a wonderful response from the children and parents choosing to participate in the program. Our Co-ordinators will be in the school Library every Tuesday morning from 8.15 until 8.40 to assist your children with their school banking needs.

## Book Fair

We are looking for volunteers for Book Fair. If you are available Thursday 26 August - Tuesday 30 August 2016, or would like to bring along a plate for morning tea, we would love to hear from you! Please return the slip below to the school office by Wednesday 24 August if you can help.



## BOOK WEEK VOLUNTEER

I am available to help with Book Fair activities at the times/ dates indicated below:

NAME: \_\_\_\_\_ CONTACT: \_\_\_\_\_



TIME	Thursday 25 August	Friday 26 August	Monday 29 August	Tuesday 30 August
AM 8.15 - 8.40				
PM 2.45—3.30				

**I will be bringing a plate for morning tea on Thursday 25 August:**

(Please tick if you are able to assist with morning tea - Morning tea will commence after the assembly. Plates can be dropped off in the Orelia Block wet area prior to the Assembly)

☐

# Anne Hamersley Primary School



## SWIMMING LESSONS

Congratulations to all of those students that went swimming during weeks 3 and 4 of this term. Our children were well behaved and made you their parents and guardians and us proud of their have-a-go attitude. It was lovely to see how many parents, grandparents and family friends came down to watch the children swim. The feedback we received

was that Altone Park were fantastic in their delivery of the lessons and in their accommodation of our students' needs and we are looking forward to swimming in 2017.

Ninety eight percent of our children from Pre-primary to Year 6 attending swimming classes. Most children passed their enrolled swimming level with many moving more than one level.

Thank you for recognising the importance of swimming by ensuring that your children attended.

## SCHOOL CHOIR

The initial response to joining our choir has been fantastic. We have in excess of 40 children who attend on Wednesdays. Thanks to Jennifer Gale, one of our parents and Jo Skellham, Amanda Schiaffini and Amy Bond her "support team", the children are involved in both percussion and voice activities.

We look forward to this enthusiastic group of children forming our very first Choir. As the end of the year and the festive season approaches, there will be many opportunities for them to perform in public.



## LITERACY MATTERS

Hello! This is the fifth instalment for supporting your child with their WRITING. Students in this stage are usually in middle primary school. They can compose a wide variety of texts such as biographies, web pages and scripts. They can adjust their writing to suit the specific purposes and audiences. Students in this stage can write cohesive paragraphs and demonstrate control over the use of grammar, punctuation and vocabulary. They have developed a large range of strategies for spelling unknown words.

### How to Support Your Child in this Stage

- Ensure your child sees other members of the family writing a range of different texts. This is also an opportunity to share and discuss what the purpose of your writing is and whom you are writing it for.
- Assist your child to select the most appropriate way to organise a piece of writing.
- Encourage your child to discuss how different characters and people are represented in texts, and make comparisons in real life.
- Praise and encourage your child's writing attempts by focusing on what is right.
- Encourage your child to use the 'Writing Process', e.g. *planning their work, drafting what they want to say, refining their ideas and making corrections and then publishing or producing a new copy for their audience.*
- Encourage your child to re-read and refine their writing both alone and with you.

This could include:

- organisation
- sentences
- paragraphs
- spelling, punctuation and grammar.

- Encourage your child to continue to experiment with new vocabulary in their writing. Discuss interesting words they have included and their meanings.
- Keep a diary or journal when you go on a trip or holiday. This is especially valuable if you are travelling and your child is missing school. Collect printed material such as brochures, leaflets and tourist guides to include in the journal.



• Encourage your child to talk about the strategies they use to attempt the spelling of unknown words and to try different strategies:

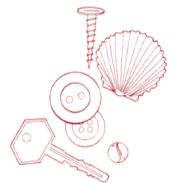
- breaking words into parts
- using common letter patterns
- using letters that work together
- thinking about the base word.

Have Fun Together!

**Paula Bell**  
Deputy Principal

## TREASURE HUNT - Grades K-2

What you'll need - Large container, buttons, screws, bottle caps, old keys, anything else you can count, and graph paper (can be hand-drawn)



### What to do

1. Find a container to hold the treasures.
2. Sort and classify the treasures. For example, do you have all the same-sized screws or keys? How are they alike? How are they different?
3. Use these treasures to tell addition, subtraction, multiplication, and division stories. For example, if we share 17 buttons among 3 friends, how many will we each get? Will there be some left over? Or if we have 3 shirts that need 6 buttons each, do we have enough buttons?
4. For older children, you can organize the treasures by one characteristic and lay them end to end. Compare and contrast the different amounts of that type of treasure. For example, there are 3 short screws, 7 long screws, and 11 medium screws. There are 4 more medium screws than long ones. Make a simple graph showing how many of each type of screw there are. This activity may also provide an opportunity to talk about fractions:  $\frac{7}{21}$  or  $\frac{1}{3}$  of the screws are long.

## Parent Pointer



Organizing the "treasures" in one's house provides practice in addition, subtraction, multiplication, and division. Children can also graph data on shapes and sizes.

## MATHS MANIA

***What comes after a million, billion and trillion?***

Place your answers in the Math Mania Box next Monday morning before school.

**Rob Guy**  
Deputy Principal

## UPDAT-ED APP FOR ANNE HAMERSLEY PRIMARY SCHOOL



### A Reminder to everyone!

Keep up to date with the latest communication and information from Anne Hamersley Primary School. The Anne Hamersley Primary School **Updat-ed** app is great for sending out alerts and reminders to the school community. One of the app's best features is the ability to save events directly into your phone's calendar and link you to the school website with one click to view the latest newsletter or photos taken of event around the school.

### Download instructions:

1. Download the Anne Hamersley Primary School app by visiting the App Store for iPhones or Google Play for Android's.
2. Search for '**Updat-ed by sponsor-ed**'
3. Select Anne Hamersley Primary School from the menu.
4. After selection the school will receive your registration request and will need to approve you before your app is up and running.



### QUOTE FOR THE FORTNIGHT

*Change is the law of life. And those who look only to the past or present are certain to miss the future.*

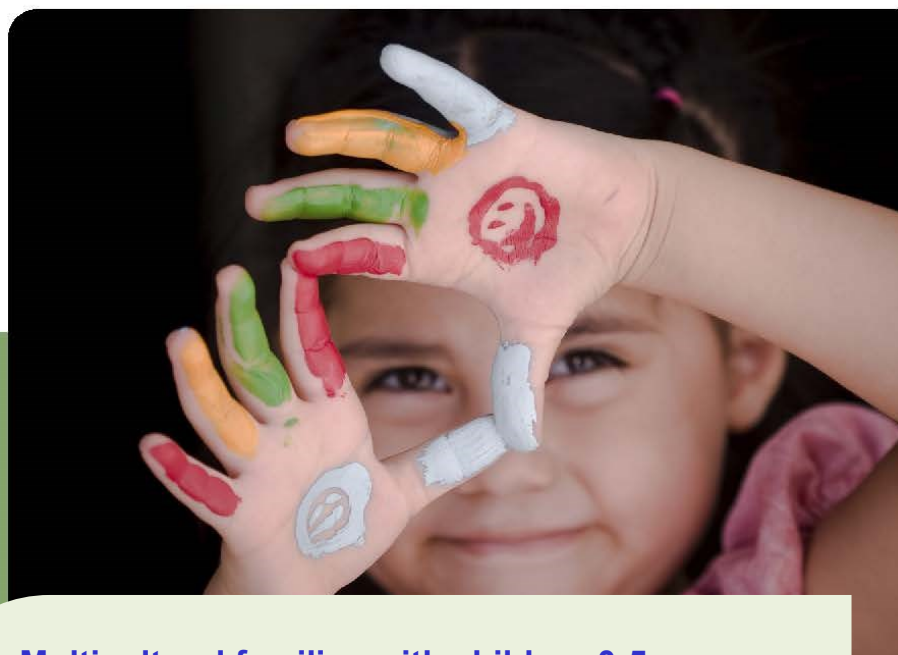
*John F. Kennedy*

*With best wishes*

**ROD W SIMEONS**  
**PRINCIPAL**

**Phone:** 0467 807 033

**E-Mail:** [Rodney.Simeons@education.wa.edu.au](mailto:Rodney.Simeons@education.wa.edu.au)



**Multicultural families with children 0-5 years  
are invited to join us at**

## **Malvern Springs Multicultural Playgroup**

**Where:** Malvern Springs Community Centre

Wyara Link, Malvern Springs (near the school)

**When:** Wednesdays 9.15am – 11.15am (school terms)

**Cost:** FREE – please bring a piece of fruit to share

**At Playgroup children can**

- Make new friends
- Have fun socialising and playing with other children
- Learn and practise skills to help them when they start school
- Develop confidence

**For more information please call Chris on 1800 171 882 or visit  
[www.playgroupwa.com.au](http://www.playgroupwa.com.au)**